

# DeskChiller

## Instruction Manual

DC4R

DC4G

DC4B

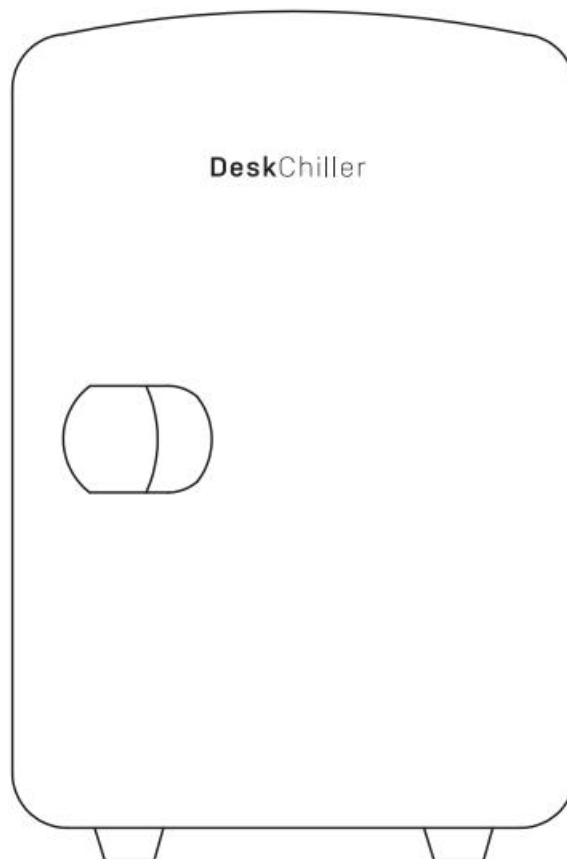
DC4Y

DC4P

DC4BLACK

DC4C

DC4GBLK



Thank you very much for buying this product. Before using your new refrigerator, please read this user manual to ensure that you gain the maximum benefit from it.

V1/2022

## Content

CHARACTERISTICS OF OUR PRODUCTS.....	1
APPLICATION.....	1
WORK PERFORMANCE.....	1
OPERATION GUIDE.....	2
Different Use Between Outdoor and Indoor.....	2
When Car Power Is Used (DC12V).....	3
When The Household Power Is Used (AC220—240V).....	3
WARMING.....	4
CLEANING.....	4
PROBLEM & SOLUTIONS.....	5

## CHARACTERISTICS OF OUR PRODUCTS

Mini Thermoelectric Cooler and Warmer is popular with drivers and field operators. It can bring you cool drinks in hot summer and warm food in winters with cold wind blowing. No matter in outdoor hiking traveling by car or in traffic jam, you can enjoy plenty of drinks and foods at a proper temperature.

This model may be carried on your back or in hand for its lightweight. Matching with AC or DC transformer attached, it can be used indoors, especially for students to store cool and hot drinks and foods in their own room. If it is placed in hotel, office or sitting room, its graceful design, beautiful appearance, luxury style and extraordinary applicable function, will bring you a sense of ease and comfort when you are holding a cup of cold drink in your hand after work.

It integrates dual functions of cooling and heating by employing semiconductor, without compressor or cryogen. It has advantages of being free from pollution, small volume, lightweight, portability, long service life and lowest power consumption.

## APPLICATION

<ul style="list-style-type: none"><li>● For holding banquet beside the lake</li><li>● For picnics and on camping trips</li><li>● For taxi drivers</li></ul>	<ul style="list-style-type: none"><li>● In students' dormitory or dining hall</li><li>● In playground</li><li>● In the office or construction site</li></ul>
<ul style="list-style-type: none"><li>● For traveling by cars</li><li>● On yacht outing or go fishing</li><li>● In wagon, truck or traveling bus</li></ul>	<ul style="list-style-type: none"><li>● For storage of medicines at a low temperature</li><li>● For preservation of fresh milk and warm food</li><li>● For home bar</li></ul>

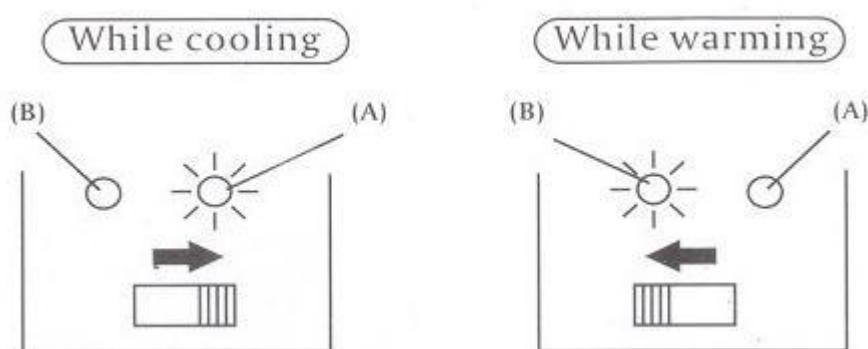
## WORK PERFORMANCE

To obtain optimized cooling effect, we suggest putting in pre-chilled foods and drinks. It will take 2 or 3 hours for cooling the unfrozen foods or drinks.

The cooler and warmer is not designed to heat cold food but to preserve hot foods at a warm temperature. If necessary, it can heat the foods with more than 2 hours. If it's applied properly following the direction, the temperature of foods can be kept for hours.

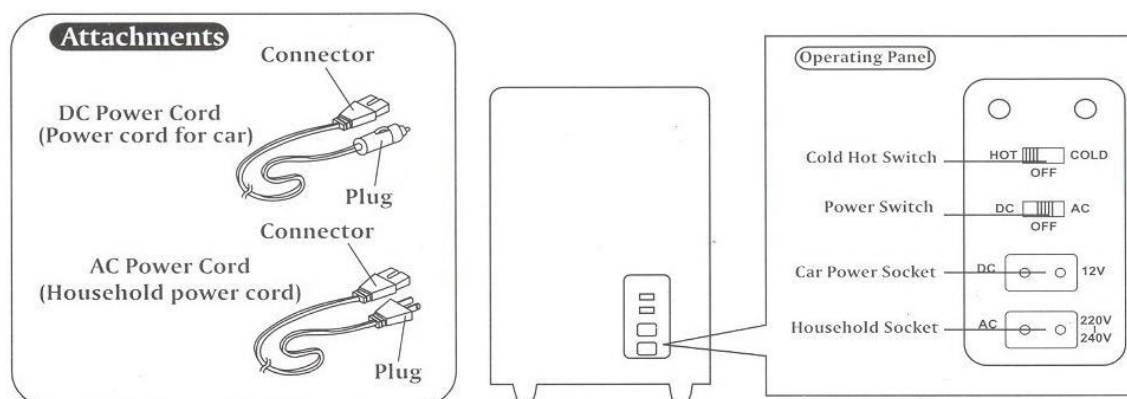
## OPERATION GUIDE

1. First make sure the switch at the side of the cooler and warmer is in OFF state, and then insert the plug of the power cord into the socket of the unit.



2. Insert the plug of the cigarette lighter into the cigarette lighter in the car.
3. Cooling: set the power switch at the position of COOLING. The green indicator will be on indicating the unit is in cooling mode.
4. Heating: set the switch at the position of HEATING. The red indicator will be on indicating the unit is in heating mode.

## Different Use Between Outdoor and Indoor



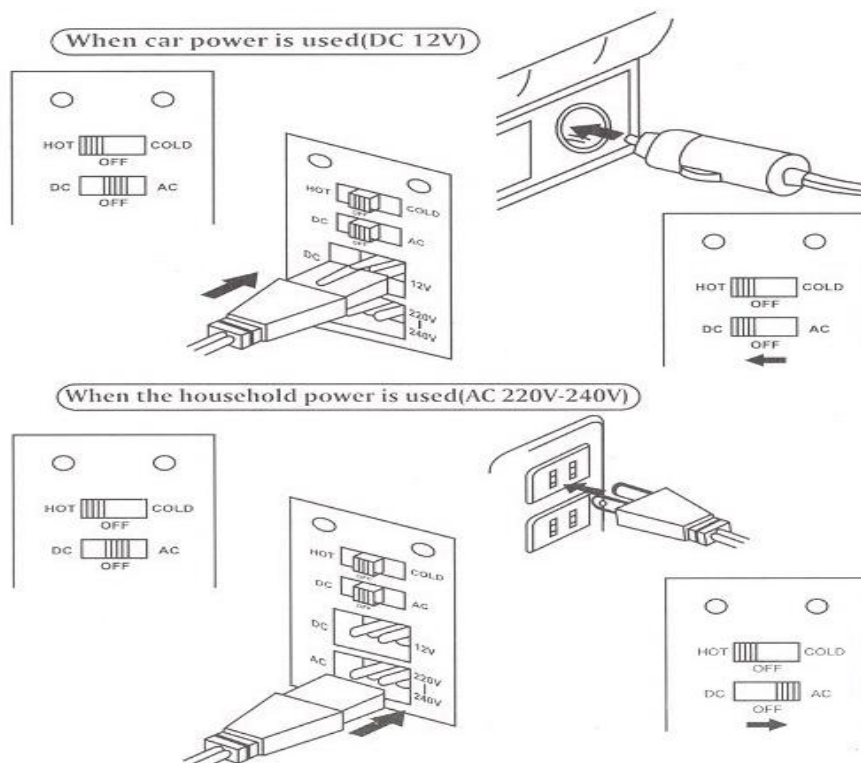
## When Car Power Is Used (DC12V)

### Notes: The appliance of products is subject to the types of cars)

1. The car engine is required.
2. The plug of DC power cord is the cord into the socket of the lighter in the car.
3. Insert the plug the of DC power cord into the socket of the lighter in the car.
4. Shift the power switch to the DC side.

## When The Household Power Is Used (AC220—240V)

1. Connect the connect of AC power cord (household power cord) with the household socket of the product.
2. Insert the power sockets into the concentric plug.
3. Turn the power switch to AC side.



## **WARMING**

For the proper operation, Please read below-stated carefully before using the appliance, misuse of the appliance will cause the deaths and in injuries of person and the appliance broken.

1. Prevent the fans from being stuck. The fans being stuck will heat the engine and cause fire. The towel, cloths and the like shall not be put on it.
2. Please confirm the sockets heating and broken, even fire.
3. Keep the appliance away from the flammable items and dampness to prevent the explosive and fire.
4. Don't break up to refit the appliance.
5. Don't switch the function of cool/warm abruptly. Switch the function after 30minutes of being on OFF.
6. Don't rinse it with water.
7. Prevent the appliance from being upside down.
8. Please don't drop or shock it
9. The appliance shall not be exposed to rain.
10. Children should be supervised to ensure that they do not play with the appliance.
11. This appliance is not intended for use by persons (including children) with reduced physical, sensory or mental capabilities, or lack of experience and knowledge, unless they have been given supervision or instruction concerning use of the appliance by a person responsible for their safety.
12. Keep ventilation openings, in the appliance enclosure or in the built-in structure, clear of obstruction.
13. Do not use electrical appliances inside the food storage compartments of the appliance, unless they are not of the type recommended by the manufacturer.

## **CLEANING**

When cleaning the unit, please switch off and unplug from its power source and allow it to cool. Wipe the inside with a clean, damp cloth. Use a mild soap with water if necessary. Do not use abrasive cleaners or scrubbers as this may damage the finish. Do NOT immerse unit in water.

## PROBLEM & SOLUTIONS

Periodically remove dust build-up on the power plug. Accumulated dust can cause a fire.

Symptom	Cause	Solution
The cold function doesn't work	Bad contact between the power socket and the power cord. The fan or blade is blocked. The appliance is too close to a wall or object.	Make sure the power cord is properly plugged into the appliance socket and the outlet. Clean the fan or blades. Keep the appliance away from walls or other objects
While operating, the appliance makes a strange noise or vibrations	The appliance is malfunctioning.	To prevent damage, turn the appliance off immediately and disconnect from power. Contact a local service center.
There is a burning smell or the case is deformed	The appliance is overheated.	To prevent damage, turn the appliance off immediately and disconnect from power. Contact a local service center.